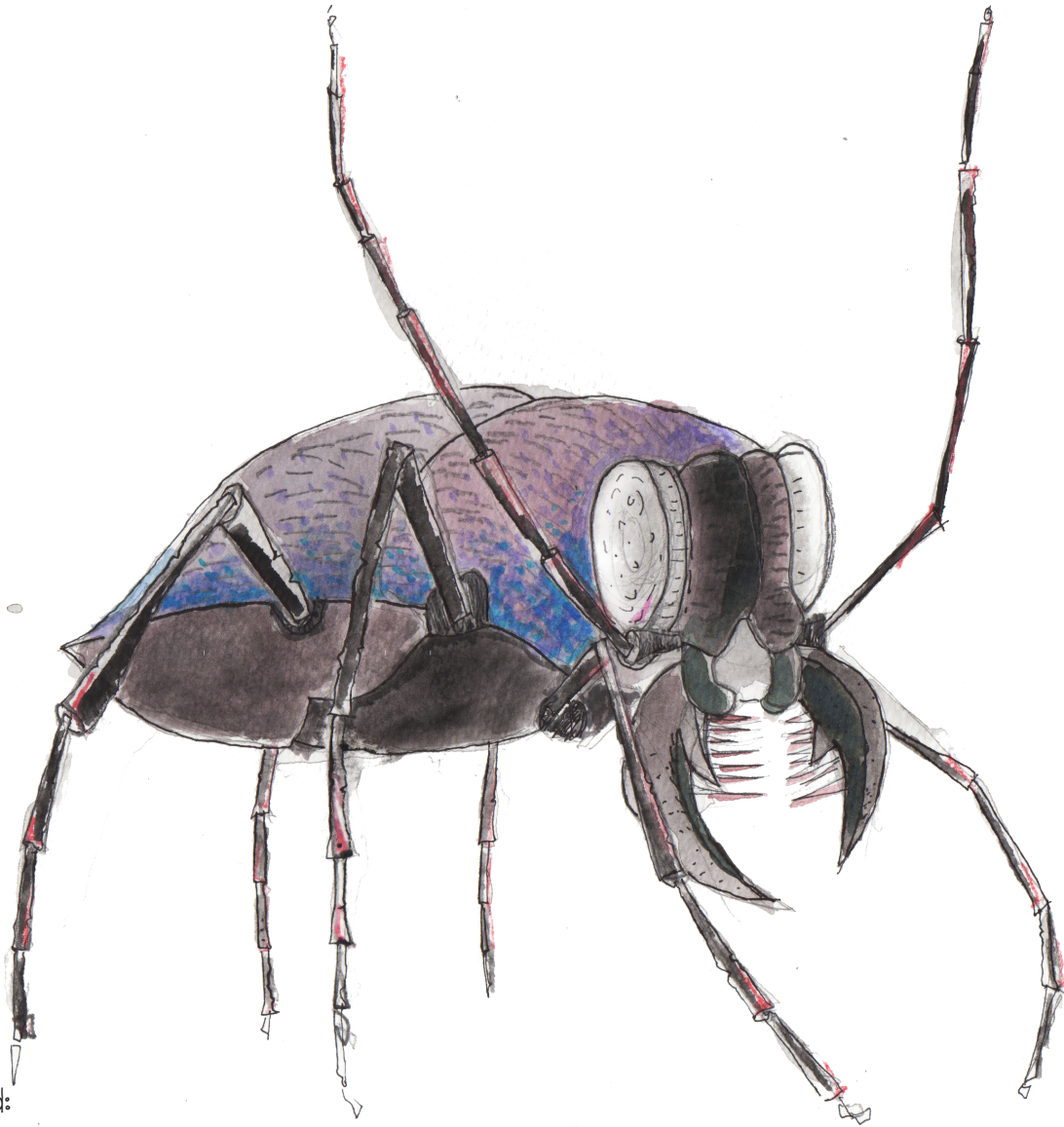


Studio Cultivate's Kindergarden

“THE SLEEPING GARDEN” AUTUMN MODULE OVERVIEW



Study Period:

September – December

The autumn months see the slow shutting-down of many plants and animals in our gardens. The most obvious and celebrated signs of autumn are the changing of leaf colour and leaf fall.

A “big-sleep” is coming... but for this to be long and uninterrupted, much preparation is needed!

“No animal, according to the rules of animal-etiquette, is ever expected to do anything strenuous, or heroic, or even moderately active during the off season..... All are sleepy, some actually asleep. All are weather-bound, more or less; and all are resting from arduous days and nights, during which every muscle in them has been severely tested, and every energy kept at full stretch.”

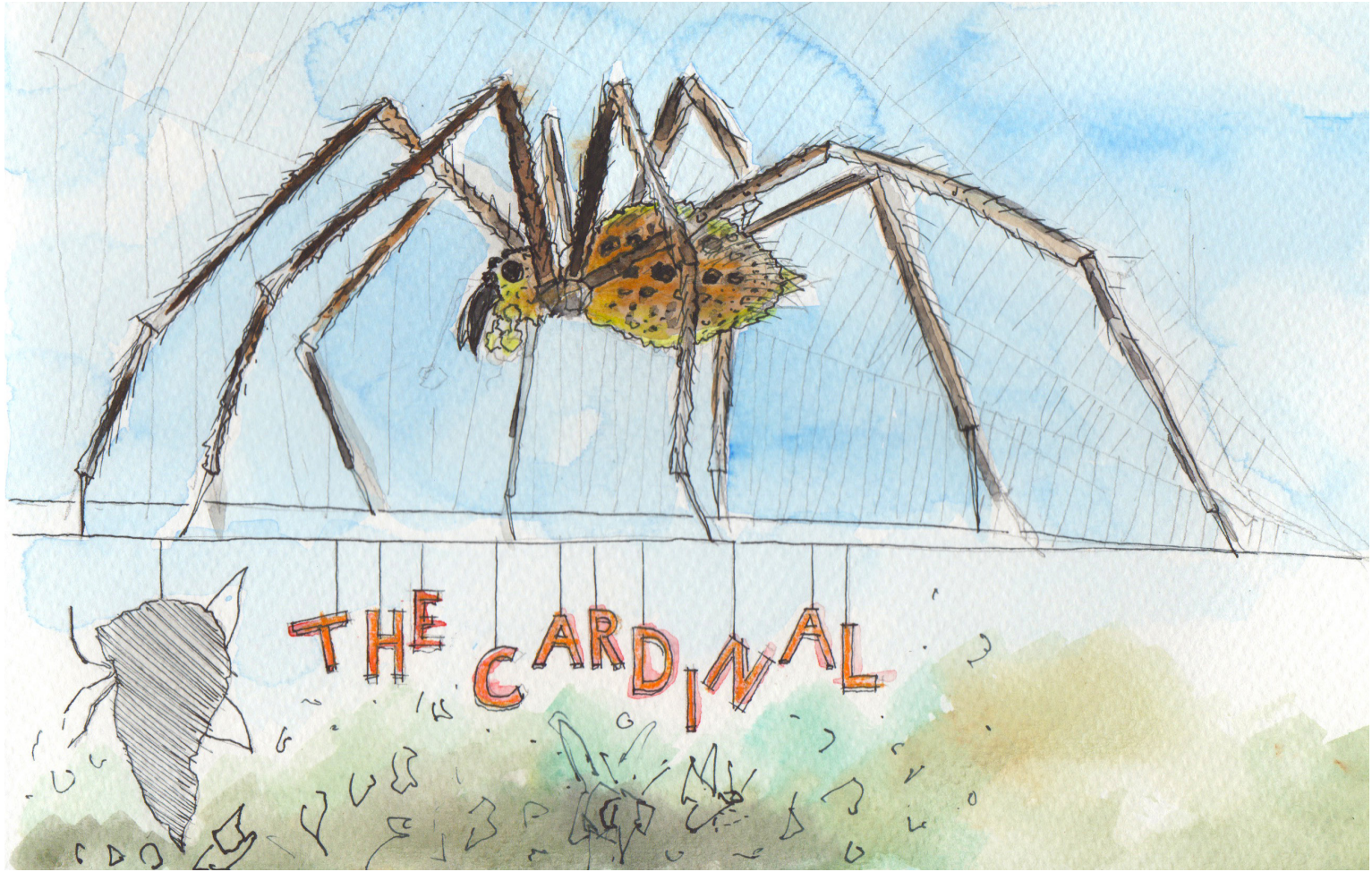
“The Wind in in the Willows”; Graham, Kenneth.



©2017 STUDIO CULTIVATE

Studio Cultivate's Kindergarden

SUMMER MODULE WORKSHOP LIST



Kindergarden's Sleeping Garden module uses the worlds of bulbs, spiders, chaffinch, beetles, lacewings and deciduous plants to explore the themes of hibernation and dormancy.

As always, there is time for seed sowing and eating, as plants from the school's garden are harvested, eaten and replaced with handy seedlings.

KW-A-20	Autumn Introductions
KW-S-21	Bird Feeders Pt. 1
KW-S-22	Bird Feeders Pt. 2
KW-S-23	Sweet Pea Seeds
KW-S-24	Hotel Hibernation Pt. 1
KW-S-25	Hotel Hibernation Pt. 2
KW-S-26	What are Bulbs?
KW-S-27	Carrot Sushi
KW-S-28	Pumpkin Seeds Stash
KW-S-29	Leaf Fireworks Pt. 1
KW-S-30	Leaf Fireworks Pt. 2
KW-S-31	Broad Bean Seeds
KW-S-32	The Cardinal Spider
KW-S-33	Scrummy Rainbow Rolls
KW-S-34	Hibernating Hoglets

