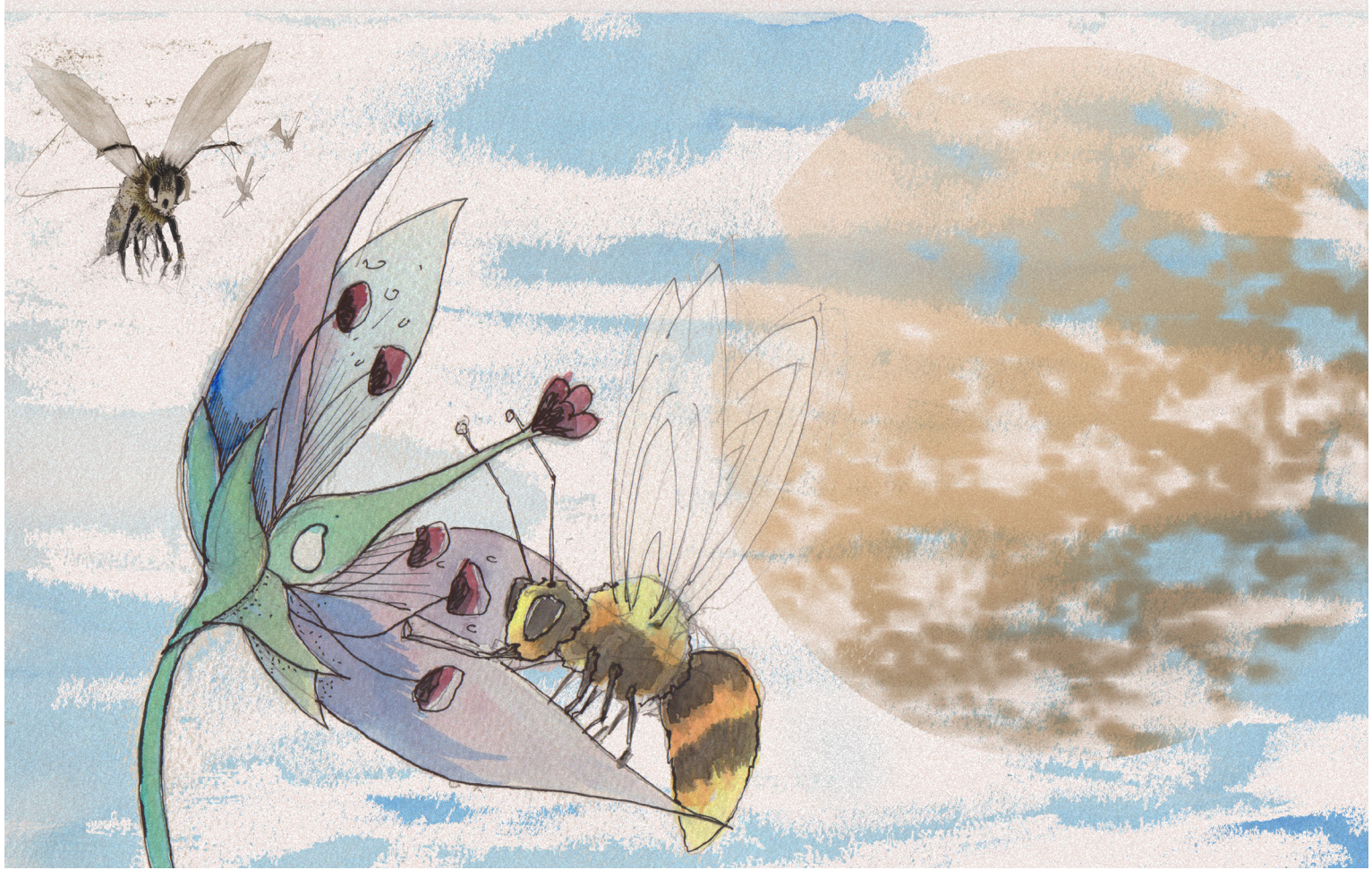


Studio Cultivate's Kindergarden

“SUMMER IS A TREAT” MODULE OVERVIEW



Study Period:

May – August

Summer will see our school gardens at their busiest and most established. Everything is happening right in front of pupils' noses. All our plants will be in full leaf and often in flower. Fruits are starting to form and many vegetables reaching maturity, ready for harvest. Wild life is everywhere, feeding on each other and from plants.

*“We love the summer,
Summer is a treat,
There are lots of flowers on our plants,
And lots of fruit to eat.”*

*There are tomatoes and sugar snaps,
And Calendula too.
There are Sunflower seeds and lettuce leaves
And Sweet Peas purple and blue.”*

Kindergarden Summer Poem - extract



©2017 STUDIO CULTIVATE

Studio Cultivate's Kindergarden

SUMMER MODULE WORKSHOP LIST



The central theme of the summer module is pollination. A series of workshops studying flower and bee anatomy help pupils build on the pollination knowledge acquired during the spring module .

The module also demonstrates the fascinating role of fruit in distributing seeds and its importance in providing people with a healthy diet. There is also an investigation into leaves and their role in helping a plant create food.

The summer module also explores two other conspicuous garden invertebrates- Ladybirds and Aphids and introduces pupils to the concept of a simple food chain.

KW-S-01	Summer Introductions
KW-S-02	Hungry Plants-Photosynthesis
KW-S-03	Flowers Pt. 1 Petals
KW-S-04	Flowers Pt. 2 Carpel and Stamen
KW-S-05	The Importance of Watering
KW-S-06	Baby Gem Lettuce Seeds
KW-S-07	Bees Pt. 1
KW-S-08	Bees Pt. 2
KW-S-09	The Pollinator Game
KW-S-10	Rainbow Chard Seed
KW-S-11	Seed Olympics Pt. 1
KW-S-12	Seed Olympics Pt. 2
KW-S-13	Carrot Seeds
KW-S-14	Pea Stick Puncture
KW-S-15	Sap Suckers
KW-S-16	Ladybirds to the Rescue
KW-S-17	Lettuce Leaf Tacos
KW-S-18	Nasturtium Seeds

